



# LED Poster

Intelligent HD LED Poster

## Product compliance

The product complies with CCC, CE, FCC, and ETL certifications. The whole process meets the requirements of national RoHS.



PRINTERS  
COPIERS  
MFPS



INDUSTRIAL  
& PRODUCTION  
PRINT



MAILING &  
DOCUMENT  
HANDLING



MANAGED  
PRINT SERVICES



MANAGED  
IT SERVICES



VOIP  
SOLUTIONS



SECURITY &  
SURVEILLANCE



DOCUMENT  
MANAGEMENT  
SOFTWARE



AUDIO / VISUAL  
SOLUTIONS

and more!

(888) 386-7834

www.dsinm.com



## High Integration

- Integrated design, no need for extra external devices.
- Light-weight design brings slim display appearance.

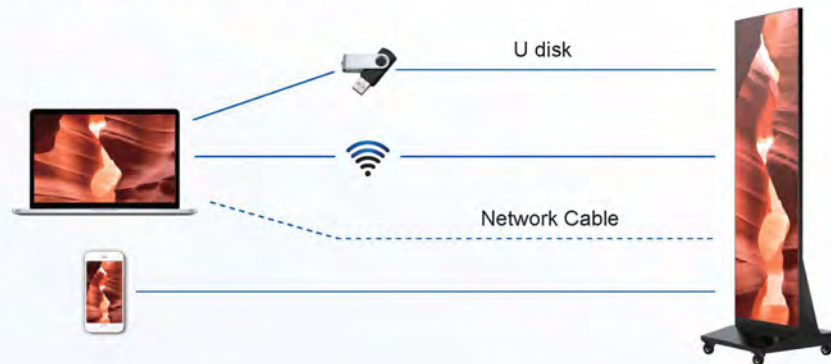
35kg	72-inch slim size

- ✓ **Display Area:**610×1716mm
- ✓ **Poster Size:**619×1917×33.5mm(without base)



## Flexible Linking Options

Support using devices including mobile, tablets and PC to carry out display set-up swiftly; Intelligent remote control and large-scale cluster deployment will ease operation process.



## HD Display Effect

Pixel to pixel calibration for each unit, guaranteeing brightness and chroma uniformity; Nanosecond-level display technology is applied to ensure good dynamic image display effect.

800cd/m <sup>2</sup>	3840Hz	6500:1	160° Wide Viewing Angle



## Phone Control led Poster

Publish contents anytime, anywhere. Send information, control devices, adjust brightness, volume just with your mobile device.



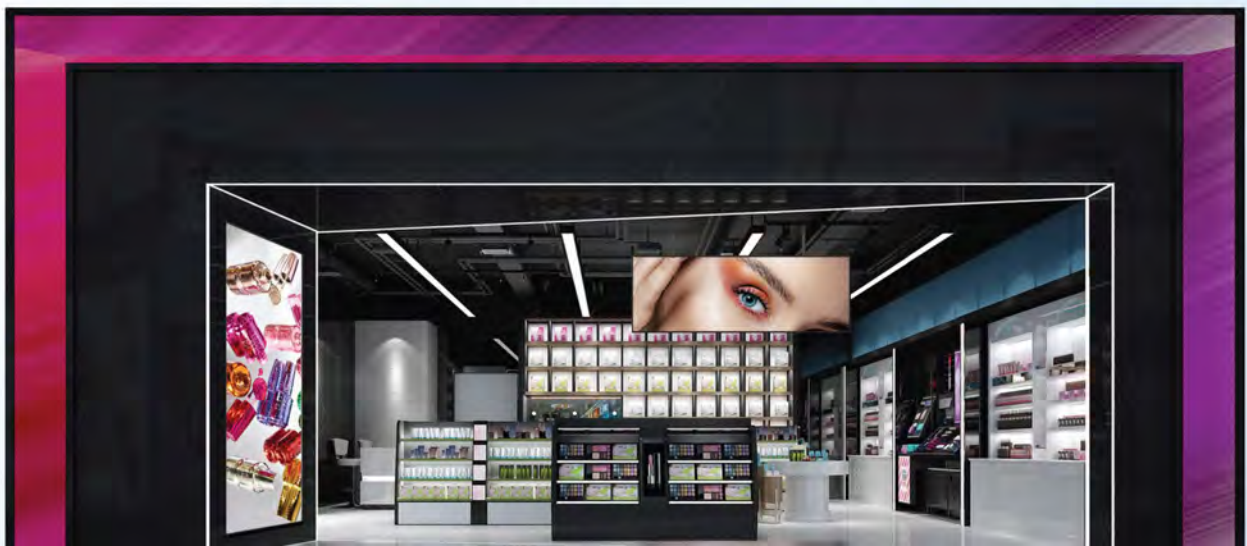
## Pre-assembled Structure

Whole-Unit shipping; Simple module assembly; Plug-and-play.



## Multi-units Splicing Available More Application Possibilities

No optical splicing Seam; Creative splicing applications; Simple disassembly.





## Various Applications

- Different installation modes are available: Foot Mounting / Hanging / Wall-mounting.
- Simple installation process satisfies various application and installation scenarios.



## Product Parameters

Product Model	P-P1910-072	P-P2542-072
Pixel Pitch (mm)	1.9	2.5
Brightness (cd/m2)	800	
Refresh Rate (Hz)	1920/3840	
Power Consumption (Max./Ave.)(W)	560/200	600/210
Cabinet Resolution (px)	320 × 180	240 × 135
Cabinet Size (mm)	610 × 343 × 33.5	
Screen Resolution (px)	320 × 900	240 × 675
Screen Display Size (mm)	610 × 1715	
Screen Size (mm)	624 × 1773 × 33.5	
Weight (kg/per screen)	38	
Working Voltage	AC100-240V 50/60Hz	
Maintenance	Front Access	
IP Rating	IP30	
Operating Temperature/Humidity (°C/RH)	-10~40/10~80%	
Installation Mode	Foot Mounting / Hanging / Wall Mounting	

\*All the data are from CVTE lab. The data above are subject to change without prior notice.



**DSI - Document Solutions, Inc.**

📍 : 4121 Prospect Ave. NE, Suite A, Albuquerque, NM 87110

🌐 : [www.dsinm.com](http://www.dsinm.com)

✉ : [info@dsinm.com](mailto:info@dsinm.com)

